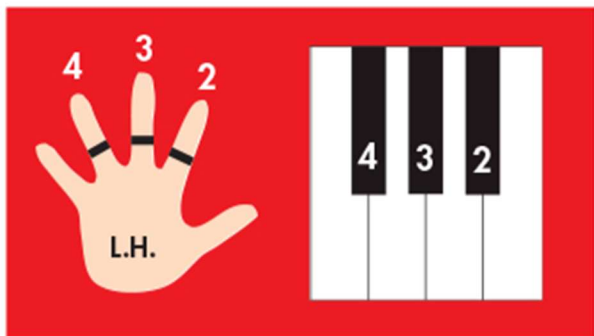


Wendy the Whale

Playing L.H. Fingers 2-3-4



Note: The teacher may pedal as the student plays.

Start on a MIDDLE 3-black-key group.

L.H. 2 2 2
f

Wen - dy the whale

play together

2
3
4

Move DOWN to next lower group.

2 2 2

moves her big tail

2
3
4

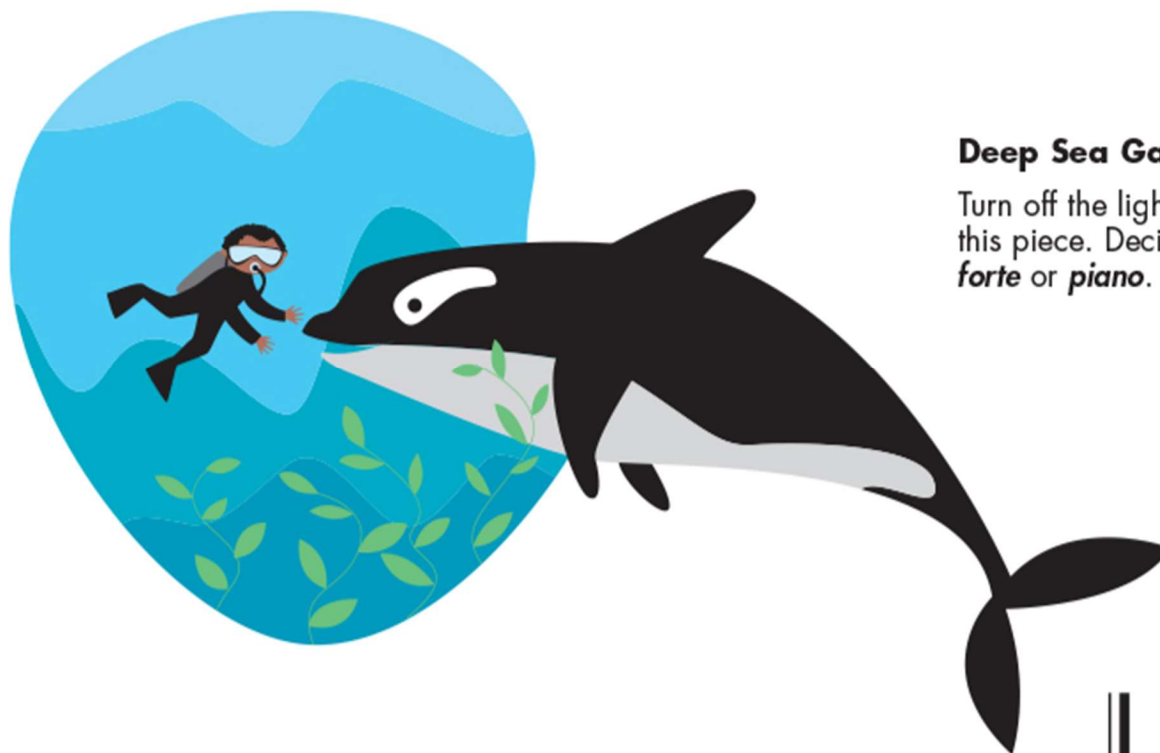
2 2 2

deep, down, and low.

2
3
4

Tips from Dallas: (pp. 32–33)

1. Be the teacher! With L.H. finger 2, point to the numbers and say, "2-2-2, together," etc.
2. Listen and watch your teacher play.
3. Your turn! Pretend your hand is a whale, doing a slow leap and dive into each LOWER 3-black-key group.



Deep Sea Game:

Turn off the lights and play this piece. Decide to play *forte* or *piano*.

Stay on the
LOWEST
3-black-key group.

L.H. 2

2

2

3

3

3

4

Hold and listen!

Wen - dy

the whale moves her

tail.

Double bar line
means the
end of the piece.
(thin line, thick line)